

Welcome to Grimm Gardens

An impactful example of local plants, integrated with legacy plants that have been used historically and become town favorites.

One area serves as an example to landscape clients and local plant enthusiasts; the second area is an oak woodland with select plants used as erosion control and a privacy screen. A third area is a moist rose garden watered by a downspout.





Grimm Gardens

Project table of contents

1. Intro
2. Theme
3. Garden Use
4. Features
5. Gallery
6. Plan
7. Plant List
8. Hardscape & Furnishings
9. Conclusion



Whimsical Arid Woodland Garden

Woodland
Cottage feel

Lush &
blooming with
interesting
textures

Erosion
Control &
Wildlife
Habitat

Whimsical Blooms & Foliage: Arid Adapted Plants in a Woodland Style Garden



Ribes malvaceum

Three garden areas are defined by the natural habitat of the microclimates they exhibit.

Showcase Garden - an unirrigated lot with arid adapted plants with year round blooms. Features 3 legacy lilac which are hand watered. Garden will feature rare and spectacular species from the local Transverse mountain ranges.

Drive way & street-side - erosion control with large attractive shrubs that have a mountain-cottage feel.

Grimm Gable Garden - main garden area featuring young, well-established oaks in one place and a rock garden with roses. Area with oaks also features legacy cemetery irises to be kept and moved to rose garden. Additional stepping stones and ground cover to prevent erosion and weeds makes a pleasant path to the Showcase Garden. Replacing ivy with rock garden native plants that will be watered well by roof runoff, that are lower growing and hold more moisture for increased fire safety. Training of legacy apple tree as a screen for front view and add several small native shrubs outside of rose garden to aid in screening view and sound from street.

A street visible example of a lush and vibrant garden scape with low water use, exceptional erosion control and water capturing possibilities with good design and wildlife support.

A Grimm Theme

"In the mountains of San Gabriel, [...] Mother Nature is most ruggedly, thornily savage."



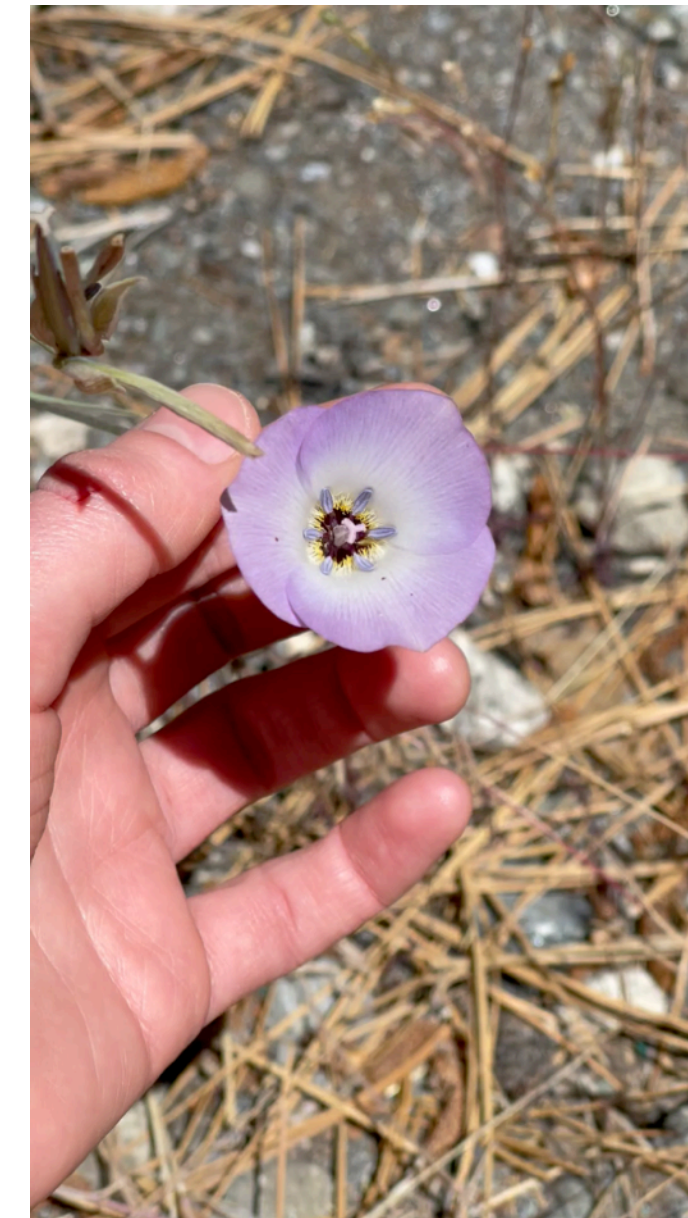
Whimsy & Cottage

Wrightwood is known for its quaint—verging on kitschy—design choices. The plants and architecture are unique to the people who have lived there. Desert plants, thorns, and grim themed plants reflect the Grimm name.



Nature-trail headquarters

On the other side of the street from Grimm Gardens is the Village Trail which features signs for native plants. PCT hikers regularly pass by as well as visitors from all over CA and the world.



Arid yet vibrant

The Transverse Ranges have rare species that thrive in both desert heat and many feet of snow. By supporting the soil, weeding, and reseeding local plants— the garden will be an example of the beauty & resilient power of our local flora & fauna.



Ice, Water & Rock

In a place of high erosion & snow melt, water must be controlled and captured: swales, mounds, boulders, and slope stabilizing plant material reinforce the land against extremes.

Garden Use



Sample Flower vase of native plants for educational events and outreach

“Keeping up with the Grimms”

In a small town, neighbors look to each other to learn, exchange resources, and solve problems. People also know who lives where and keep the town gossip mill well-oiled. Gardening with new, low-water use plants, plants that aren’t bought at box stores, and with long wait times from first planting to established specimen, can deter some people from trying more sustainable and wildlife friendly gardens. Being adjacent to a National Forest, makes it all the more imperative to do, though. Visitors can see for themselves what is special about this area in one of the most universally American ways of passively communicating to “the world”—the front yard.

The **Showcase Garden** will be a place where seeing is believing. It will be attractive, need no irrigation, and be low-maintenance. Locals & travelers can come visit and talk with the Grimms in our garden. Lined with log benches on the street side of the split-rail fence, with signage about the Garden on the split-rail fence.

The **Grimm Gable Garden** will be a naturalistic interpretation of a formal garden, hinting to a labyrinth or “secret garden” feel where each area has different lines of sight blocked from the road, yet from indoors the view from the window is a lush, blooming woodland & meadow. A meandering path connects the two gardens, which will be surrounded by low-growing wildflowers and shrubs that conceal the path ahead and behind as one walks along it, as though getting lost in a fairy tale. Close to the home will have lower growing, higher water use, aromatic and attractive flowers to cut and bring inside to enjoy or make wreaths, processed home goods, and gifts. Fire-wise updates will be removing two larger, struggling pines and allowing the Live Oak trees space to fully mature. Trees will have space between them to be fire-wise and natural mulch will develop that breaks down into soil better than pine needles, reducing need to rake. Wood will be reused for benches to be placed in street easement to help with snow player parking & issues with plant trampling.

The **Driveway** will be reinforced with large .5-1.5” stones along its sides, swales upstream will be created and directed into planters with overflow channels.

As an investment: Build curb-appeal in a small-town way, make space inviting to studio guests, create a clear separation between the street and yard to prevent trampling & trashing area during snow season and an additional barrier from snow plows. Controlling, collecting, and redistributing water will make the landscape more resistant to flooding and (by retaining water) also more resistant to drought and fire danger.



Legacy plants

Growing legacy plants along side plants that are more arid helps to shade the existing plants and use less water. Arid plants can benefit from being near water even when not directly watered themselves.

Features

Sustainable

Attractive

Garden serves as a visual for prospective clients and visitors to see value of CA native plants, especially Transverse range plants.

Waterwise

Erosion control;
Water collection &
redistribution

Low-maintenance

Educational

Purple & Scented

Privacy in house

Firewise

Sound & Sight Screen

Mentionable &
Memorable

Holiday ready:
Signage to explain
garden's value
(and also **please** don't
trample under snow).

Grimm Theme:
Cemetery irises, thorny
flowers, purples, grey-
green foliage, and desert
adapted plants

Legacy Plant
Friendly

Visible to Public



Heat & Freeze Adapted



Cottage-Woodland Style



Key client needs

Showcase Garden-- Front side lot:

- Local native plants
- Possible seat or two that can't be removed
- Signage for explaining garden
- Year round showy with no irrigation (some hand watering to establish or during extremes ok)
- Clean way to contain driveway from plants & erosion
- Weeding program to remove invasive weeds and leave native grasses (best done by hand) mulch ok in some areas but not liked by most local plants

Driveway:

- Regrade & fill with decomposed granite & tamp
- Cover in stone on slope and define water overflow areas for swales higher up in yard
- Reinforce split rail fence and/or replace damaged sections

Grimm Gable Garden-- main center front yard:

- Showcase young oaks, reinforce root area near them with stones & small slope stable plants. Make long term plan for their care
- Prune or possible remove pines with disease (mistletoe, ant, etc)
- Remove ivy from boulder garden & replace with yarrow & wildflowers
- Create small maintenance path / stepping stones to access Showcase garden
- Redirect water from downspout better
- Evergreen sound & sight screen from inside windows to street/street to inside home

GALLERY

Main visual concepts

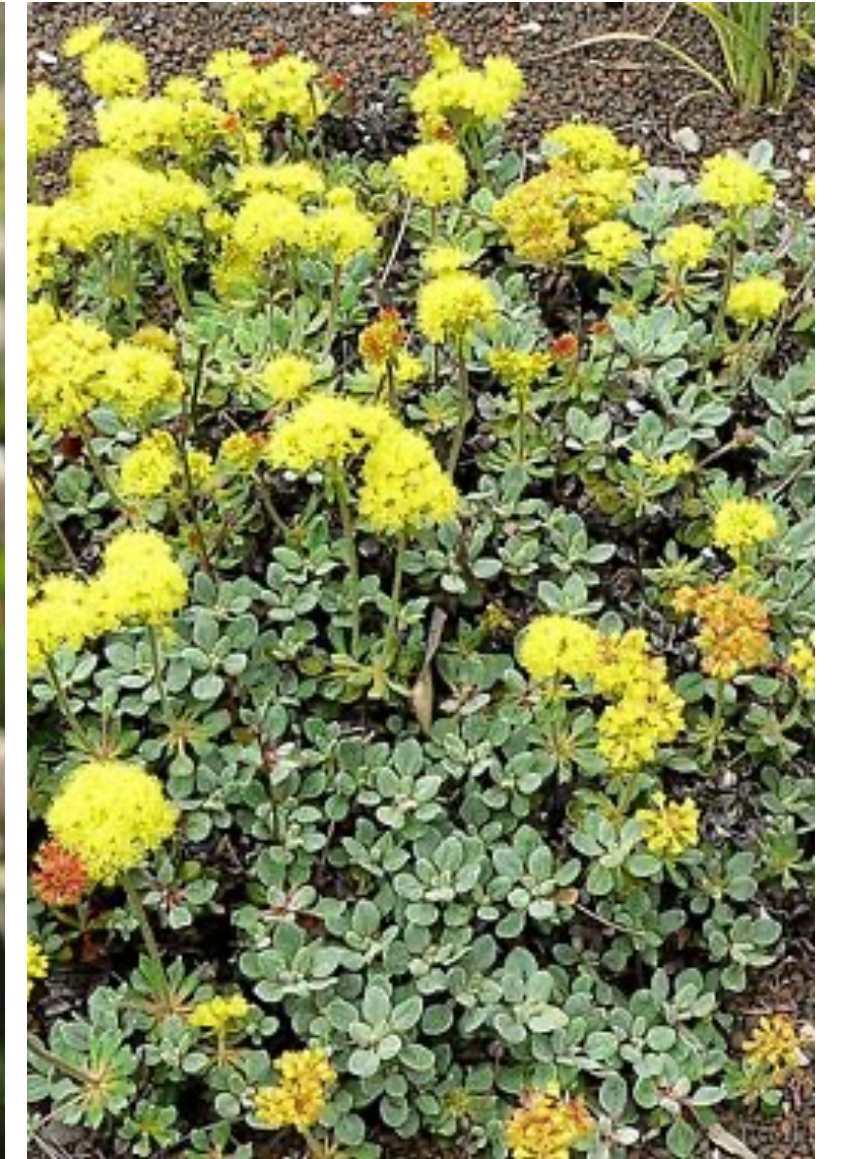
Growing rare & local species

Creating beauty

Building Awareness

Water & Fire wise

More enjoyment of space

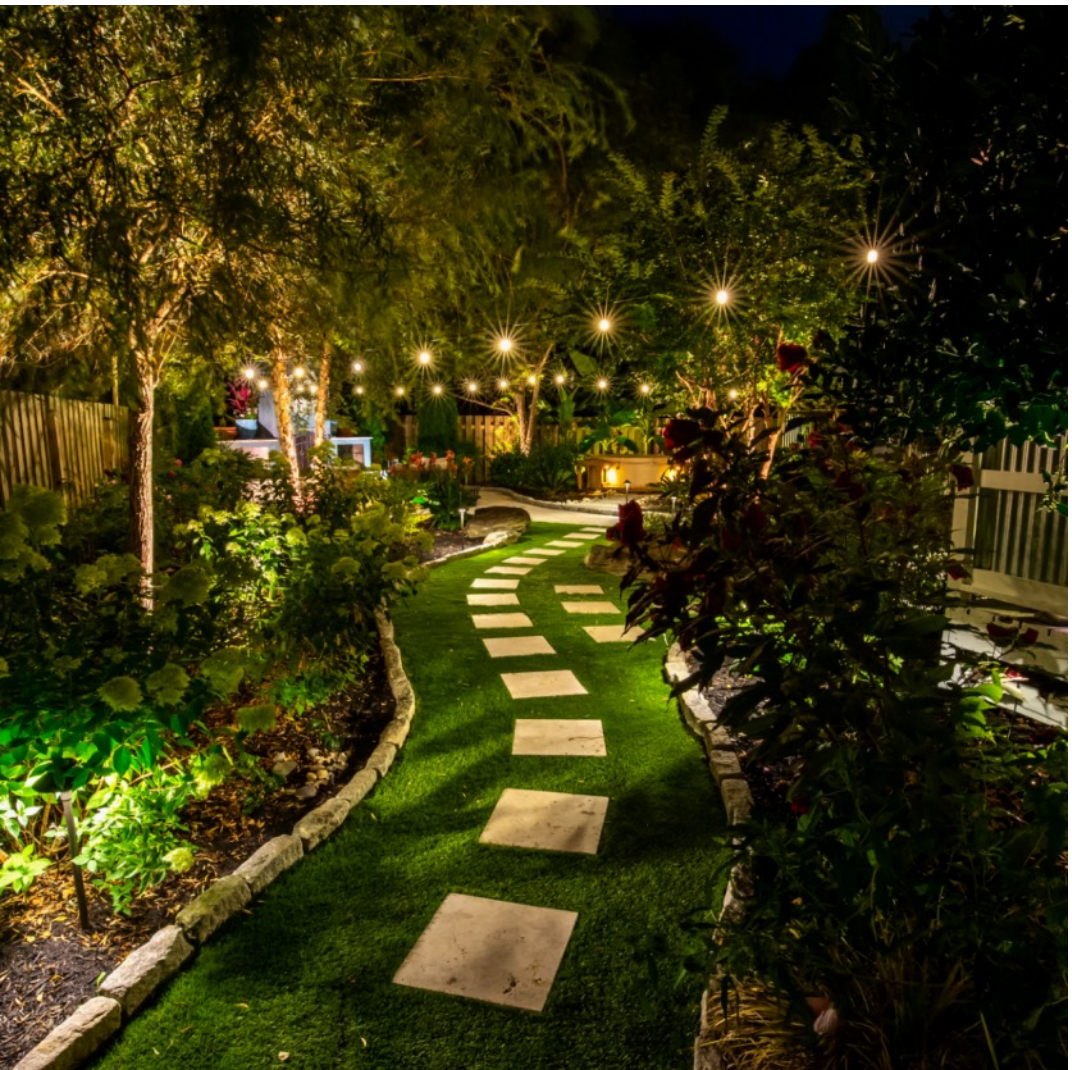


Business Opportunities

Grow food & medicines

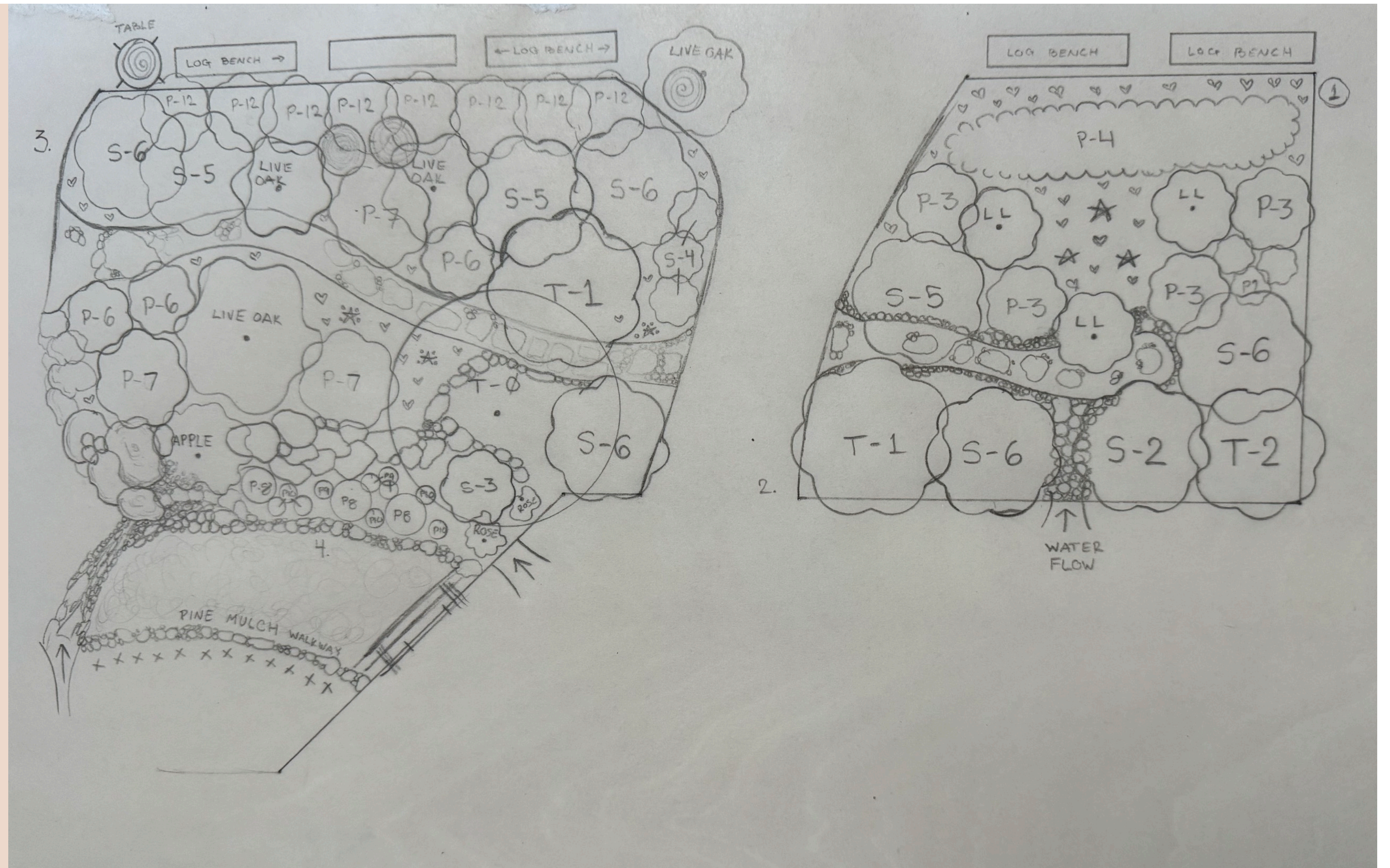








PLAN



Plant Material

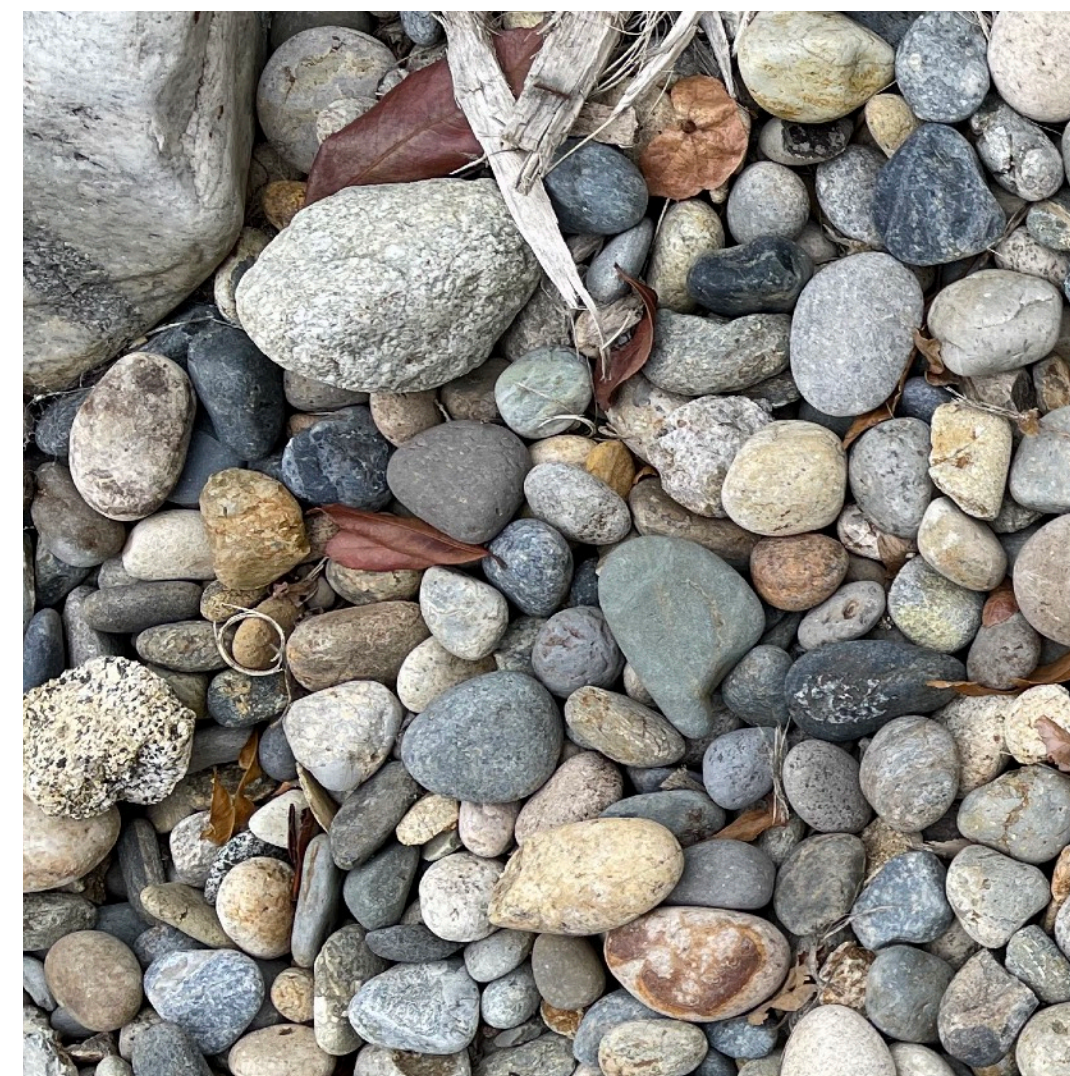
KEY	PLANT NAME	SPECIFICATIONS	QTY.	SIZE	VENDOR	PRICE
T-0	Jeffrey Pine	Tall, established pine tree; good growth habit and pruned well above roof; by removing smaller unhealthy pines, pines selected to stay will thrive with the young oaks	0			
T-1	Mountain Mahogany (Cercocarpus betuloides)	Tall, evergreen screen with attractive, fluffy seed pods; Considered an alternative to bamboo	2	1gal	GNN	\$12.00
T-2	Blue Elderberrv SHRUBS	Tall screen with pale blue berries that attracts wildlife	1	1anal	GNN	\$12.00
LL / S-1	Legacy Lilacs Unknown varieties	Beautiful, thriving specimens, a favorite. Care must be taken when planting around them. If possible make more cuttings of any pruned material.	3			
S-2	Flannel Bush (Fremontodendron californicum)	Hardy and resilient, blooms and dried flowers visible most of year, evergreen background shrub that is full of wildlife year round;	1	1gal	GNN	\$15.00
S-3	Chaparral Currant (Ribes malvaceum)	5'W, beautiful blooms with a cottage woodland feeling, yet it is more arid tolerant. This plant has no thorns unlike most in its genus and this garden	3	1gal	MNP	\$15.00
S-4	Chaparral Honeysuckle (Lonicera interrupta)	3'W; Chaparral Honeysuckle is a hardy shrub with a woody trunk, spikes of flower clusters of yellow honeysuckle flowers. Red, round fruits. Quite drought-tolerant, hummingbird plant	1	1gal	MNP	\$15.00
S-5	Hollyleaf Cherry (Prunus ilicifolia)	12x12; Beautiful glossy green foliage, red berries, and a "holiday" feel	3	1gal	GNN	\$12.00
S-6	Western Chokecherry (Prunus virginiana var. demissa)	12'W; Ominously named yet a delightful plant; gorgeous whimsical white blooms and clusters of berries; good screen	4	1gal	LPN	\$12.00
	PERRENNIALS					
★	Short-joint Beavertail (Opuntia basilaris var. brachyclada)	0.5'x2" spreading habit of small cactus clusters; Native to the Northern dry side of the San Gabriel Mountains is a small, hardy, attractive beavertail cactus with brilliant fuchsia flowers; 1B.2 Rare plant ranking, rare, threatened, or endangered in CA and elsewhere.	3	Clone	On-site	
P-1a	San Gabriel Beardtongue (Penstemon labrosus)	1'x1'; Small but spectacular when blooming.	1	pack	LPN	\$12.00
P-1b	Royal Penstemon (Penstemon speciosus)	1'x1'; Small but spectacular when blooming. Currently established and reseeding; seeds on hand				
P-2	California Buckwheat Eriogonum fasciculatum	2'H x 2'W; Evergreen; blooms Spring, Summer, & Fall; Mounding, spreading habit like mountains; planted slightly close so overlap can occur; Seeds can be started at the Sustainability Garden to save on cost and create a mass planting for impact;	1	Pack	GNN	\$7.00
P-3	Interior California Buckwheat (Eriogonum fasciculatum var. polifolium)	3'H x 3'W; Lovely arid adapted local species; white and plentiful blooms of white cover the stems; Long bloom season	12	1gal	GNN	\$12.00
P-4	Wright's Buckwheat (Eriogonum wrightii var. subscaposum)	A pastel colored buckwheat, light leaves & flowers; Foliage is interesting ground cover	1	Pack	LPN	\$10.00
P-5	Sanddune Wallflower (Erysimum capitatum)	1'H x 1'W; Brilliant yellow flowers; Evergreen and drought-adapted;	1	Pack	SDBS	\$12.00
P-6	Desert Wishbone-bush (Mirabilis laevis)	1'Hx8'W; Spreading ground cover; bright purple flowers, interesting leaves and desert adapted; prune during summer dormancy for best appearance	1	Pack	SDBS	\$12.00
P-7	California Wildrose (Rosa californica)	2'H x 4'W; Spreading groundcover of native roses to compliment legacy roses	1	1gal	GNN	\$15.00
P-8	Yerba Buena (Clinopodium douglasii)	3'H x 3'W; Spreading groundcover of lovely fragranced flowers & leaves which are edible and good for tea beside walk way, where it will be trained to grow among the rock garden bed as a replacement for the ivy	3	1gal	GNN	\$12.00
P-9	Lemon Lily (Lilium parryi)	8'H x 2'W; a rare species of lily. It is native to the southwestern United States and northern Mexico where it is a rare sighting in moist areas in mountain habitat.	4	1gal	LPN	\$10.00
P-10	Mountain Mint (Pycnanthemum californicum)	1'H x 2'W; Spreading groundcover of aromatic leaves beside walk way, able to take extra water from roof down spout.	10	1gal	GNN	\$7.00
P-11 o	Plain Mariposa Lily (Calochortus invenustus)	1'H x 1'W; A stunning flowering bulb that emerges from several small thin grass-like leaves; Companion plant among short-joint beavertail to protect bulbs from being eaten; Seeds sourced on-site			On-site	
P-12	Catalina Currant (Ribes viburnifolium)	2'H x 4'W; Spreading groundcover of perfume scented leaves beside drive way, against a small slope under the young oaks; Groundcover to prevent weeds & erosion;	10	1gal	GNN	\$7.00

GNN = Grow Native Nursery; ENG = El Nativo Growers; MNP = Mariposa Native Plants; LPN = Las Pilitas; SDBS = CNPS San Diego Seed and Bulb Sales

Rare and local plants



Hardscape



Hardscape

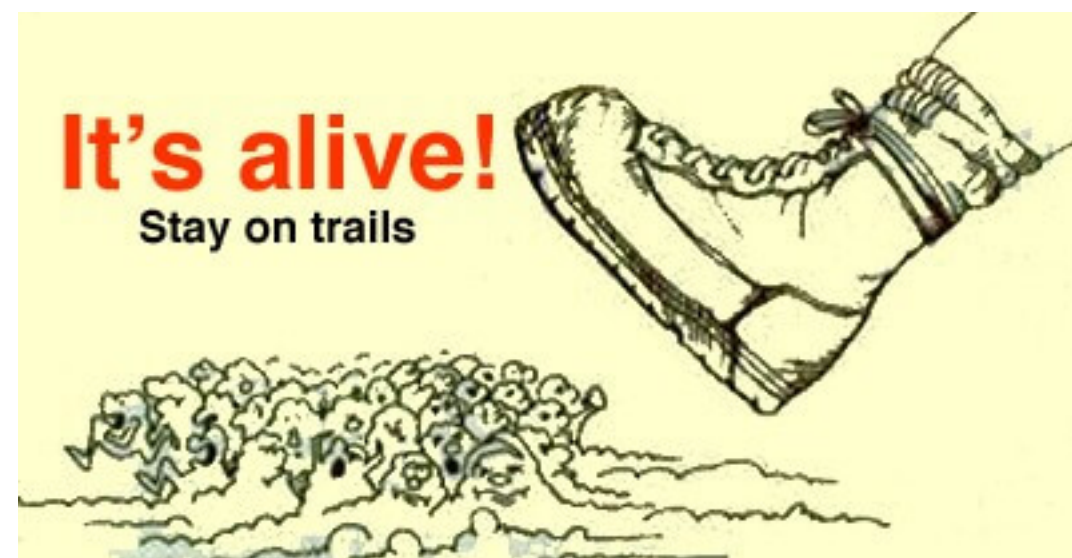
KEY	HARDSCAPE	SPECIFICATIONS	QUANTITY	SIZE/VOLUME	VENDOR	PRICE PER UNIT
H-1	Upcycled logs & rocks	Source rocks on-site by digging swales, or in local free groups; Logs on site already		2827sqft	N/A	N/A
H-2	Walkway stone	Smaller rocks sourced on site with a soil/rock sifter		640sqft	N/A	N/A
H-3	Filler stone / gravel	Smallest rocks sourced on site with soil / rock sifter		320sqft	N/A	N/A
L-1	Lighting Fixture	FX Luminaire PL LED Path Lights in Weathered Iron, default lights; PX Light unit and components	12		FX Luminaire	

Locally sourced, economical



Furnishings

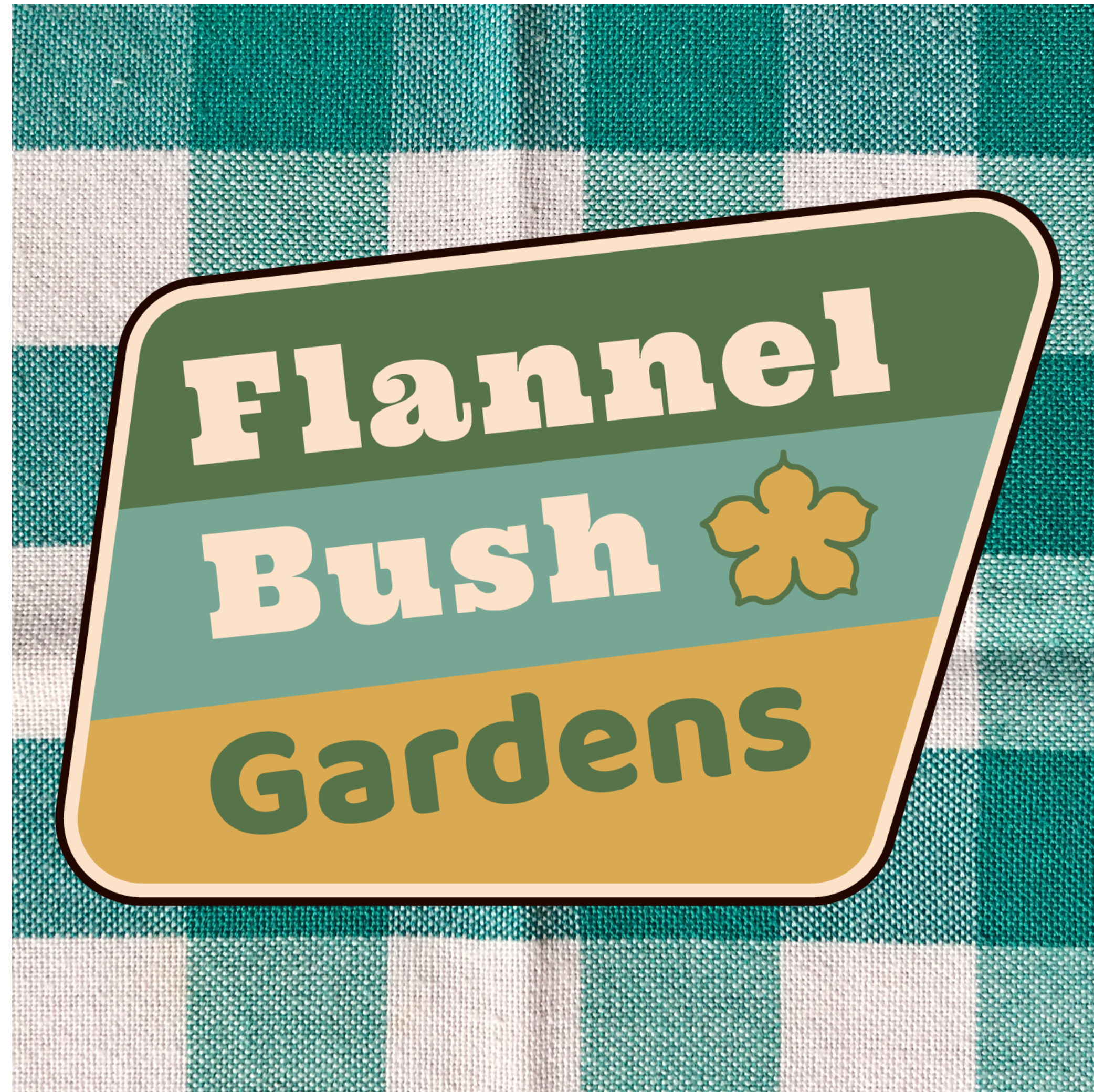




Conclusion

A welcoming home garden
that is beautiful, historical,
and educational.





Contact Us & Social Media

FlannelBush Gardens

Lead Gardener: Jack Grimm

657-217-2109 Wrightwood, CA

<https://FlannelBushGardens.com>

info@flannelbushgardens.com

 @flannelbushgardens

 @flannelbushgardens